

Fabco TC-28 Transfer case Parts Manual

Pro Gear Fabco TC-28 Transfer case Parts Manual to assist in identifying your Fabco unit.

If you need any assistance identifying the correct transfer case unit for your truck and equipment, contact your Fabco replacement part specialists at Pro Gear and Transmission.

Pro Gear Transmission has same day shipping and 1000's of products in stock and ready to ship internationally for your next project.

For parts or service contact the Fabco specialists at Pro Gear & Transmission, Inc.

1 (877) 776-4600
(407) 872-1901
parts@eprogear.com



**Parts Manual
Transfer Case – Model TC 28
625-0551 Revision A**

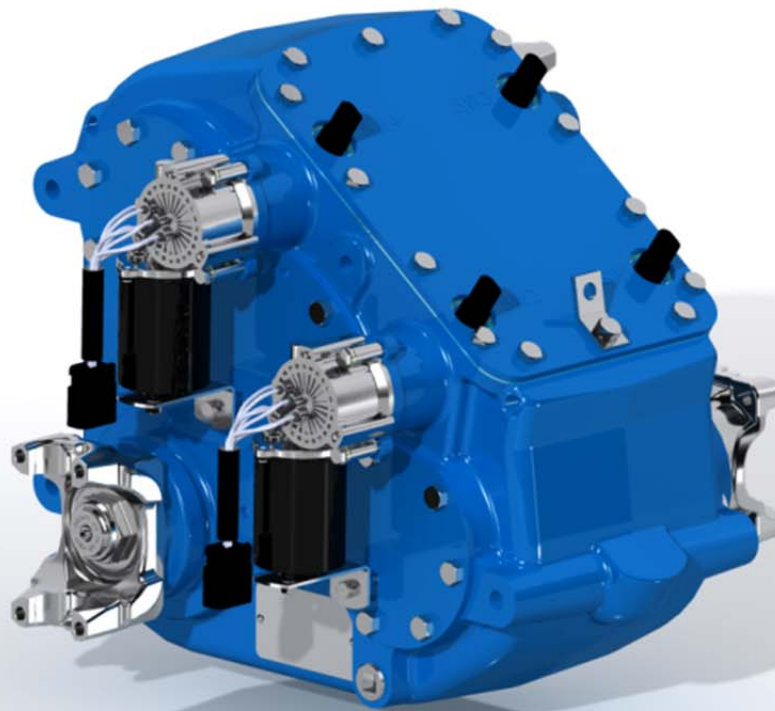




Table of Contents

| | |
|---|----|
| Main Housing and Related Parts | 4 |
| Input Shaft and Related Parts | 8 |
| Intermediate Shaft and Related Parts | 10 |
| Rear Axle Output Shaft and Related Parts | 12 |
| Front Axle Output Shaft and Related Parts | 14 |
| Shift Shaft (High/Low Engagement) and Related Parts | 16 |
| Shift Shaft (Front Axle Engagement) and Related Parts | 18 |

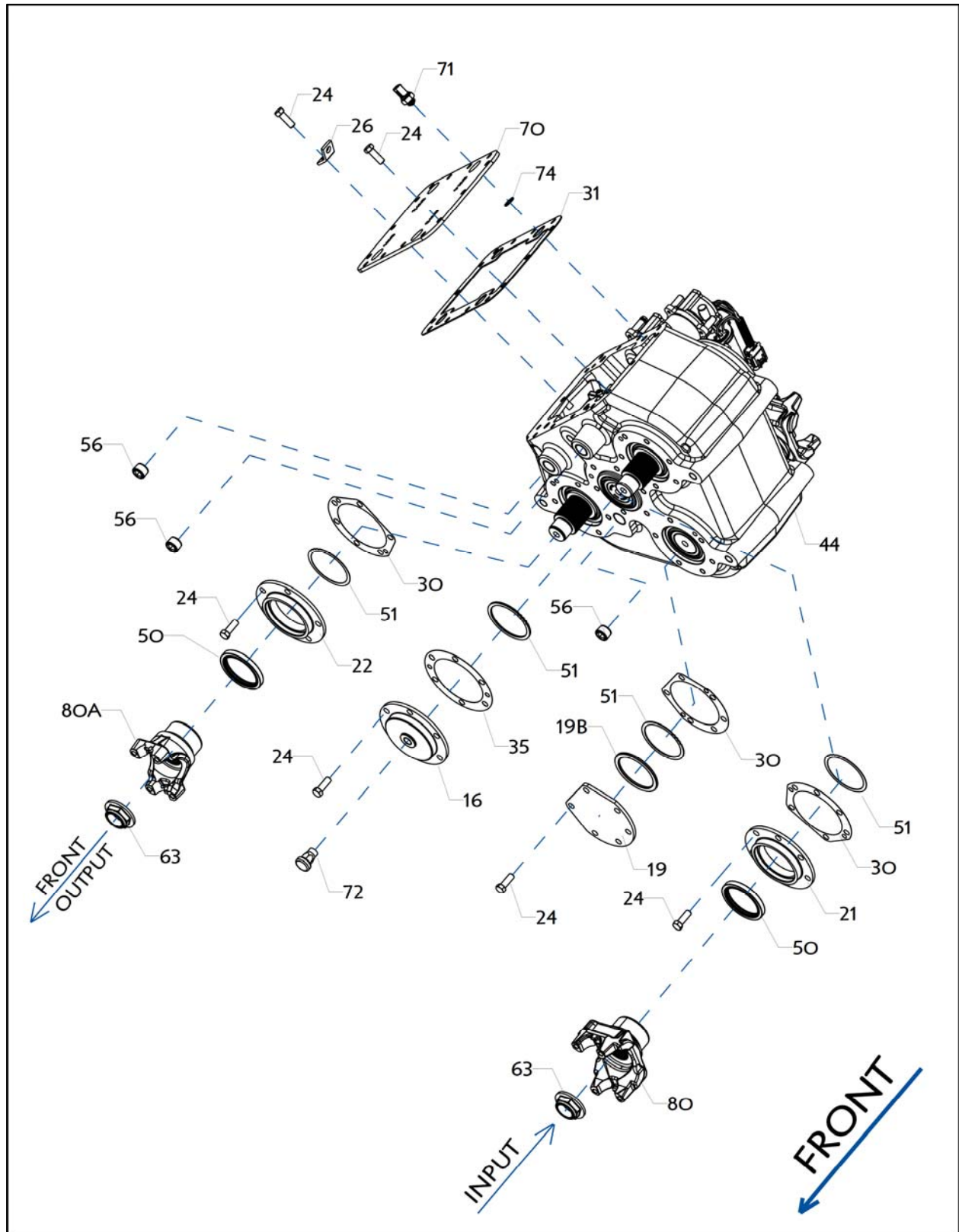
To Use This Parts Manual

1. Refer to the exploded view which illustrates the needed part.
2. Find the required part in the exploded view and then note the item number
3. Locate the item number in the parts list for part number, description and quantity.

NOTE: When ordering parts, specify model number, part number, serial number or other information that is on the Fabco nameplate located on the transfer case housing.

Part numbers contained in this manual were in effect at the time the manual was approved for printing and are subject to change without notice or liability. Fabco Automotive Corporation reserves the right to change parts at any time.

Main Housing and Related Parts



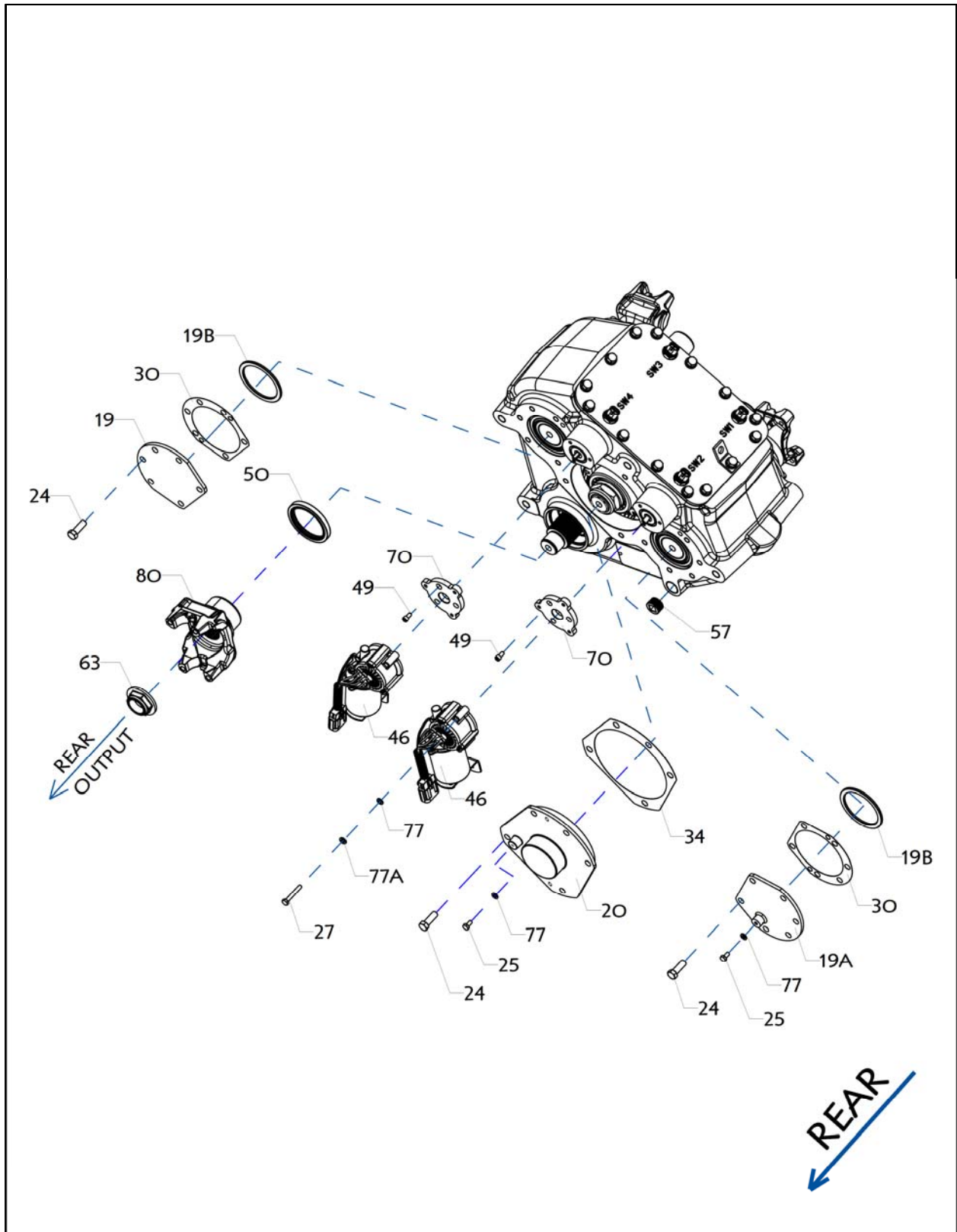
Main Housing and Related Parts

| <u>ITEM</u> | <u>PART NUMBER</u> | <u>DESCRIPTION</u> | <u>QTY</u> |
|-------------|---|------------------------------------|------------|
| 16 | 235-0736 | CAP, INTERMEDIATE, VENT | 1 |
| 19 | 235-0738 | CAP, PLATE | 1 |
| 19B | 756-0372 | RING, CAP, SPACER | 1 |
| 21 | 237-0749 | CARRIER, SEAL, INPUT | 1 |
| 22 | 237-0752 | CARRIER, SEAL, FRONT OUT | 1 |
| 24 | 265-0239 | BOLT, 7/16-14 x 1, GRADE 5, HH | 38 |
| 26 | 273-0687 | BRACKET, LIFTING | 1 |
| 30 | 427-0339 | GASKET, CARRIER | 3 |
| 31 | 427-0573 | GASKET, COVER PLATE | 1 |
| 35 | 427-0575 | GASKET, INTERMEDIATE | 1 |
| 44 | 478-0377 | HOUSING, MACHINED | 1 |
| 50 | 732-0384 | SEAL, OIL | 2 |
| 51 | 744-0377-001 | *SHIM, INTERNAL, .002 THICK | * |
| | 744-0377-002 | *SHIM, INTERNAL, .005 THICK | * |
| | 744-0377-003 | *SHIM, INTERNAL, .015 THICK | * |
| | 744-0377-004 | *SHIM, INTERNAL, .030 THICK | * |
| | *SELECT SHIM COMBINATION TO ACHIEVE .001 TO .005 FLOAT. | | |
| 56 | 758-0229 | PLUG, 3/4 NPT SQUARE COUNTERSUNK | 3 |
| 63 | 775-0446 | NUT, HEX, LOCK, FLANGED, M36 x 1.5 | 2 |
| 70 | 793-0694 | PLATE, COVER | 1 |
| 71 | 798-0366 | SWITCH, LIMIT, ELECTRIC SHIFT, NC | 4 |
| 72 | 836-0223 | VENT, BREATHER, 3/8 NPT | 1 |
| 74 | 927-0427 | WASHER, COPPER, SEALING | 10 |
| 80 | 964-0364 | YOKE, END, SPL 90/100 SERIES. | 1 |
| 80A | 964-0443 | YOKE, END, SPL 55/1480 SERIES. | 1 |

NOTE: THE FOLLOWING ITEMS NOT SHOWN FOR CLARITY.

| | | | |
|----|----------|---------------------------|---|
| 37 | 429-0342 | HARNESS, ELCTRICAL, SHIFT | 1 |
| 81 | 255-0468 | CLAMP, TYRAP, BLACK | 1 |

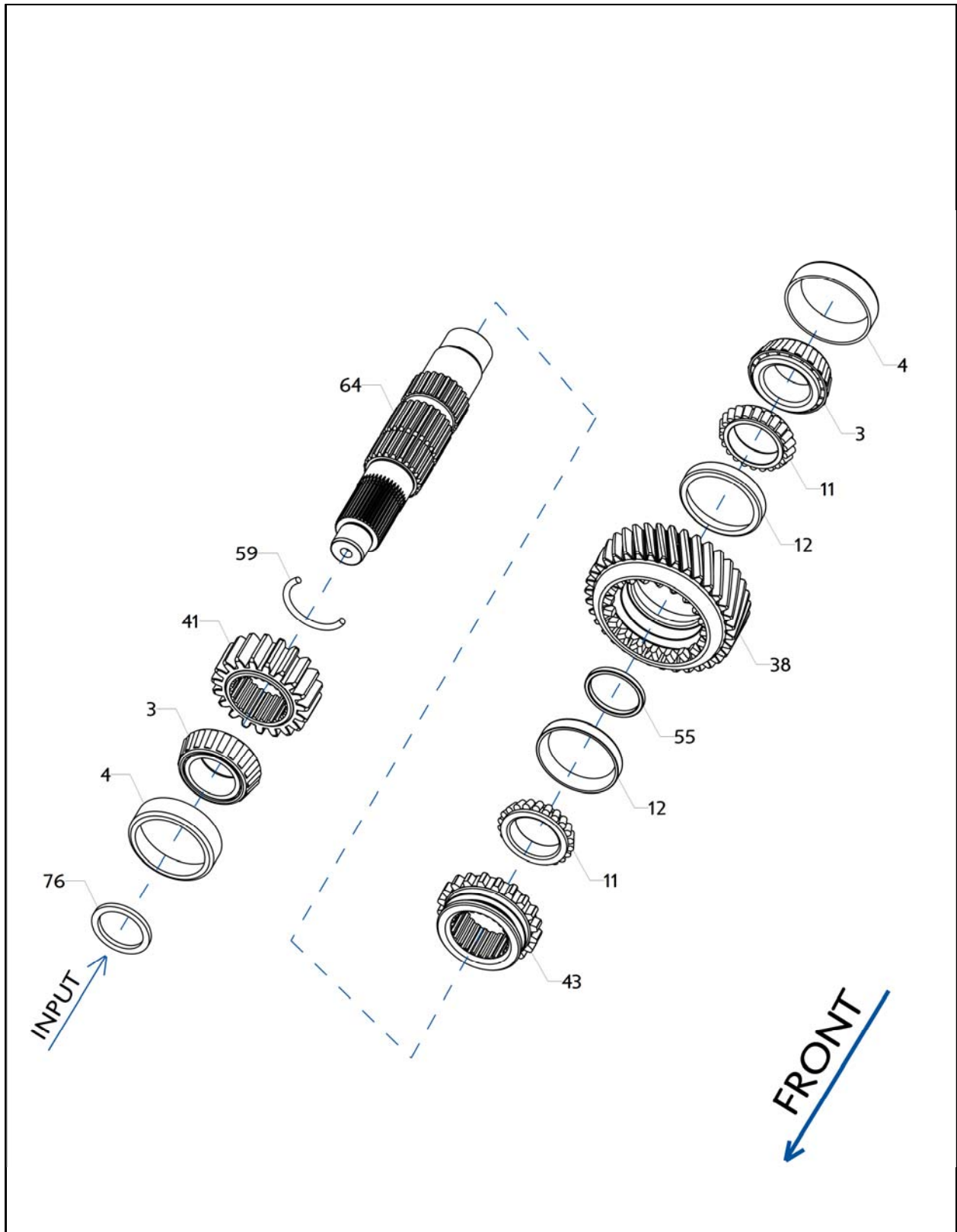
Main Housing and Related Parts



Main Housing, Bearing Caps/Carriers and Related Parts

| <u>ITEM</u> | <u>PART NUMBER</u> | <u>DESCRIPTION</u> | <u>QTY</u> |
|--------------------|---------------------------|---|-------------------|
| 19 | 235-0738 | CAP, PLATE | 1 |
| 19A | 235-1738 | CAP, ASSEMBLY, PLATE | 1 |
| 19B | 756-0369 | RING, CAP, SPACER | 2 |
| 20 | 235-0763 | CAP, INTERMEDIATE, BEARING | 1 |
| 24 | 265-0239 | BOLT, 7/16-14 x 1, GRADE 5, HH | 16 |
| 25 | 265-0343 | BOLT, 1/4-20 x 1/2 GRADE 5, HH | 2 |
| 27 | 283-0332 | SCREW, 1/4-20 X 1-3/4, HEX HEAD, GRD 8 | 6 |
| 30 | 427-0339 | GASKET, CARRIER | 2 |
| 34 | 427-0574 | GASKET, INTERMEDIATE | 1 |
| 46 | 668-0283 | MOTOR, SHIFT, ELECTRIC, TC-28 | 2 |
| 49 | 724-0782 | SCREW, CAP SOCKET HEAD, 1/4-20 x 1/2 LG | 6 |
| 50 | 732-0384 | SEAL, OIL | 1 |
| 57 | 758-0274 | PLUG, 3/4 NPT SQUARE SOCKET HEAD MAGNETIC | 1 |
| 63 | 775-0446 | NUT, HEX, LOCK, FLANGED, M36x1.5 | 1 |
| 70 | 793-0697 | PLATE, ADAPTER, MOTOR | 2 |
| 77 | 927-0889 | WASHER, ID 9/32 DIA X OD 1/2 DIA | 8 |
| 77A | 927-0338 | WASHER, 1/4, SPRING LOCK (SPLIT) | 6 |
| 80 | 964-0364 | YOKE, END, SPL 90/100 SERIES. | 1 |

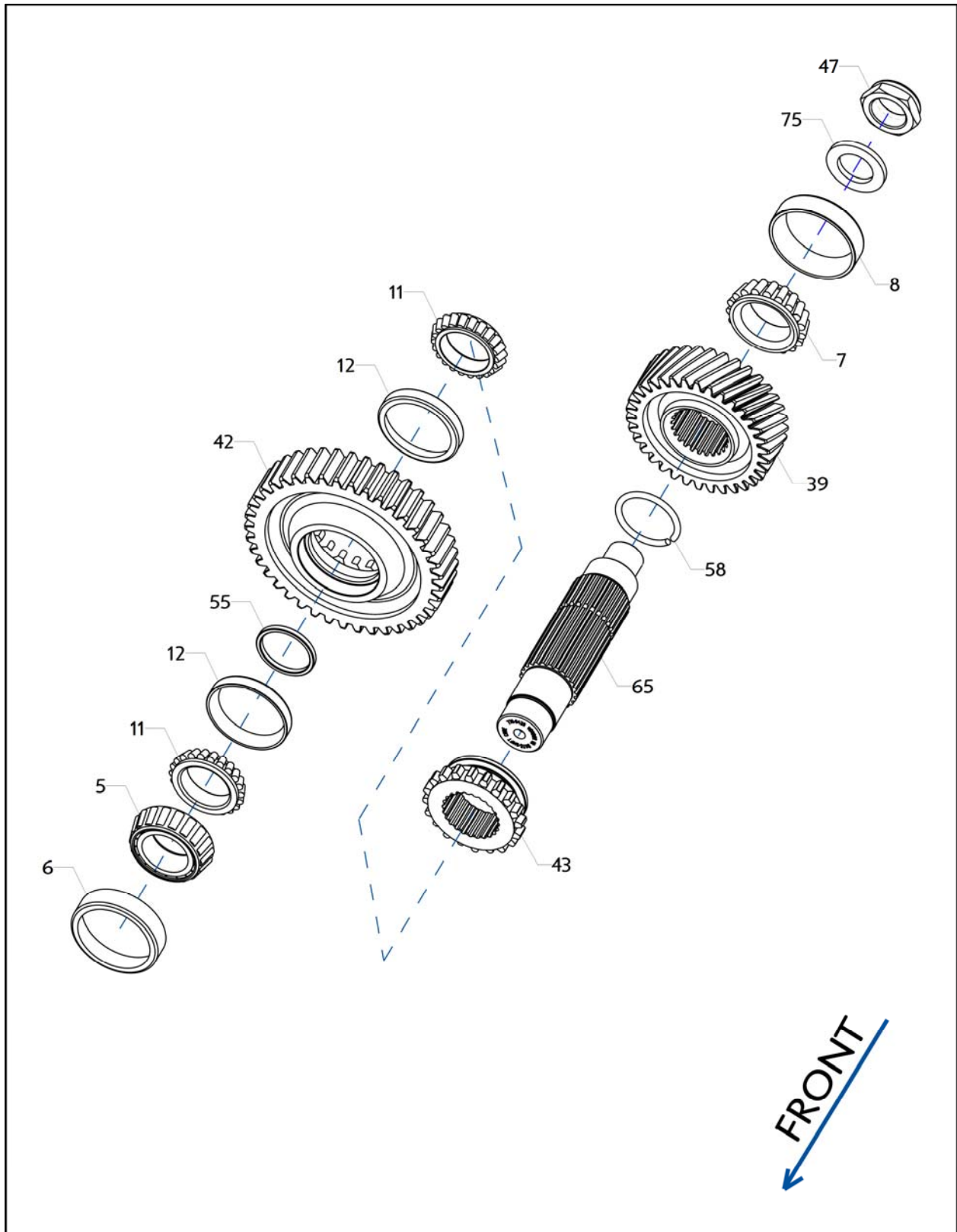
Input Shaft and Related Parts



Input Shaft and Related Parts

| <u>ITEM</u> | <u>PART NUMBER</u> | <u>DESCRIPTION</u> | <u>QTY</u> |
|---|---------------------------|----------------------------------|-------------------|
| 3 | 233-0598 | BEARING CONE | 2 |
| 4 | 233-0599 | BEARING CUP | 2 |
| 11 | 233-0628 | BEARING CONE | 2 |
| 12 | 233-0629 | BEARING CUP | 2 |
| 38 | 432-0833 | GEAR, HIGH RANGE, 35 TEETH | 1 |
| 41 | 432-0837 | GEAR, LOW RANGE, 19 TEETH | 1 |
| 43 | 432-0839 | GEAR, CLUTCH | 1 |
| 55 | 756-0368-001 | RING, BEARING SPACER, .279 THICK | * |
| | 756-0368-002 | RING, BEARING SPACER, .282 THICK | * |
| | 756-0368-003 | RING, BEARING SPACER, .285 THICK | * |
| | 756-0368-004 | RING, BEARING SPACER, .288 THICK | * |
| | 756-0368-005 | RING, BEARING SPACER, .291 THICK | * |
| | 756-0368-006 | RING, BEARING SPACER, .294 THICK | * |
| | 756-0368-007 | RING, BEARING SPACER, .276 THICK | * |
| | 756-0368-008 | RING, BEARING SPACER, .273 THICK | * |
| *SELECT SPACER TO ACHIEVE .001 TO .005 SHAFT FLOAT. | | | |
| 59 | 762-0345 | RING, SPLIT RETAINING | 1 |
| 64 | 776-0427 | SHAFT, INPUT | 1 |
| 76 | 927-0888 | WASHER, SPACER, TC-28 | 1 |

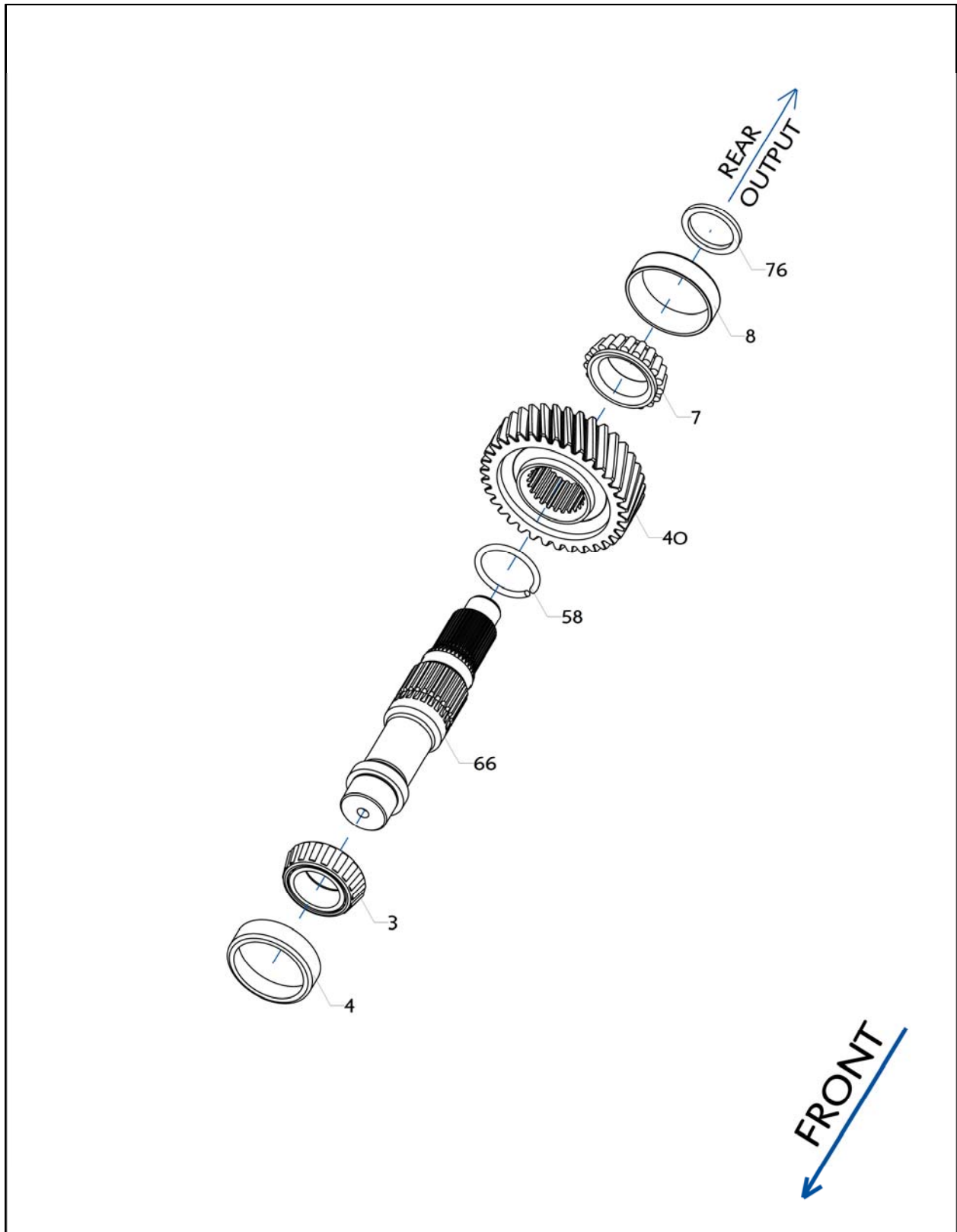
Intermediate Shaft and Related Parts



Intermediate Shaft and Related Parts

| <u>ITEM</u> | <u>PART NUMBER</u> | <u>DESCRIPTION</u> | <u>QTY</u> |
|-------------|---|----------------------------------|------------|
| 5 | 233-0622 | BEARING CONE | 1 |
| 6 | 233-0623 | BEARING CUP | 1 |
| 7 | 233-0624 | BEARING CONE | 1 |
| 8 | 233-0625 | BEARING CUP | 1 |
| 11 | 233-0628 | BEARING CONE | 2 |
| 12 | 233-0629 | BEARING CUP | 2 |
| 39 | 432-0834 | GEAR, HIGH RANGE, 34 TEETH | 1 |
| 42 | 432-0838 | GEAR, LOW RANGE, 41 TEETH | 1 |
| 43 | 432-0839 | GEAR, CLUTCH | 1 |
| 47 | 688-0694 | NUT, 1 1/2-12, HEX, SELF LOCKING | 1 |
| 55 | 756-0368-001 | RING, BEARING SPACER, .279 THICK | * |
| | 756-0368-002 | RING, BEARING SPACER, .282 THICK | * |
| | 756-0368-003 | RING, BEARING SPACER, .285 THICK | * |
| | 756-0368-004 | RING, BEARING SPACER, .288 THICK | * |
| | 756-0368-005 | RING, BEARING SPACER, .291 THICK | * |
| | 756-0368-006 | RING, BEARING SPACER, .294 THICK | * |
| | 756-0368-007 | RING, BEARING SPACER, .276 THICK | * |
| | 756-0368-008 | RING, BEARING SPACER, .273 THICK | * |
| | *SELECT SPACER TO ACHIEVE .001 TO .005 SHAFT FLOAT. | | |
| 58 | 762-0292 | RING, SPLIT RETAINING | 1 |
| 65 | 776-0435 | SHAFT, INTERMEDIATE | 1 |
| 75 | 927-0775-007 | WASHER, INT. SHAFT, REAR | 1 |

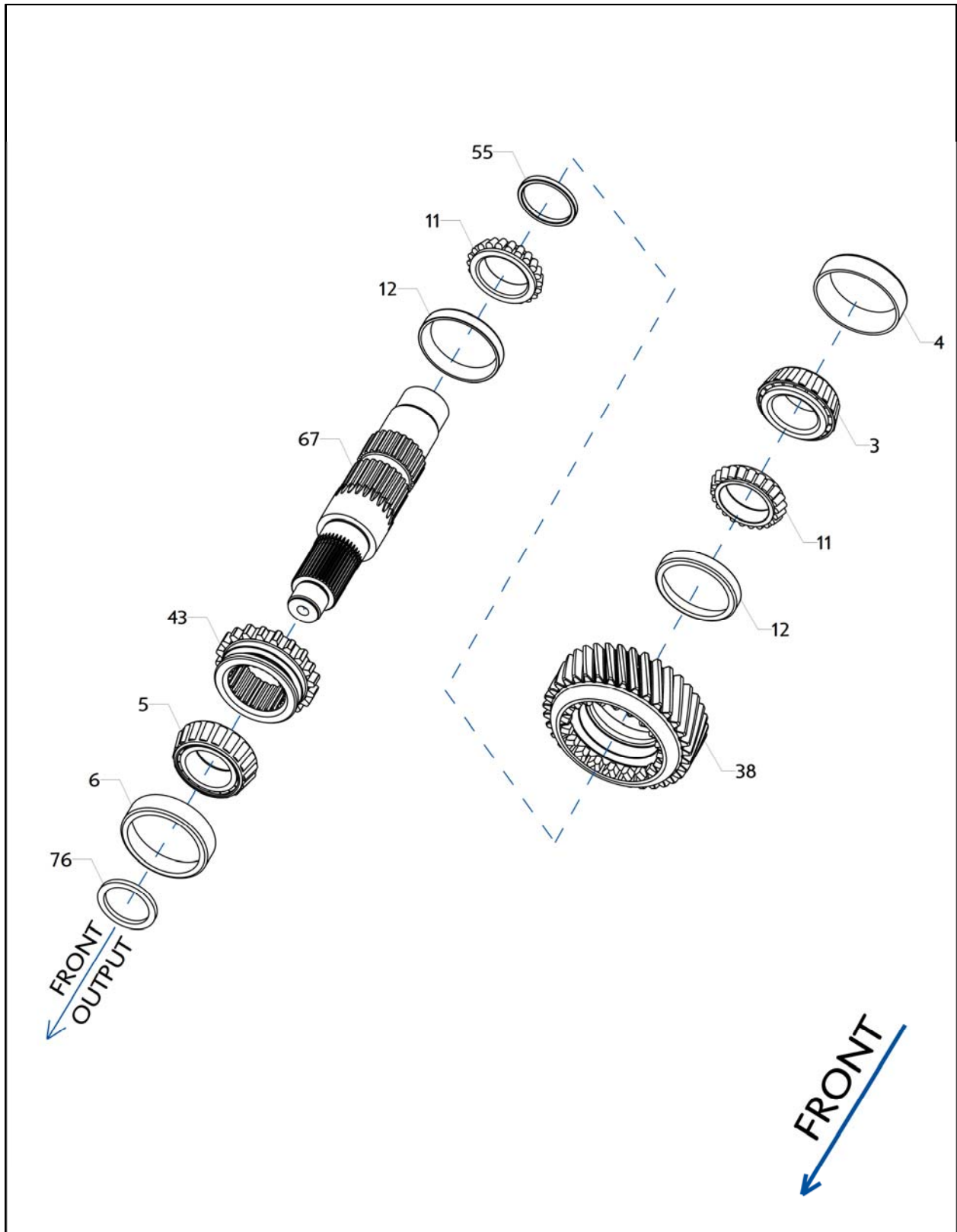
Rear Axle Output Shaft and Related Parts



Rear Axle Output Shaft and Related Parts

| <u>ITEM</u> | <u>PART NUMBER</u> | <u>DESCRIPTION</u> | <u>QTY</u> |
|-------------|--------------------|----------------------------|------------|
| 3 | 233-0598 | BEARING CONE | 1 |
| 4 | 233-0599 | BEARING CUP | 1 |
| 7 | 233-0624 | BEARING CONE | 1 |
| 8 | 233-0625 | BEARING CUP | 1 |
| 40 | 432-0836 | GEAR, HIGH RANGE, 35 TEETH | 1 |
| 58 | 762-0292 | RING, SPLIT RETAINING | 1 |
| 66 | 776-0429 | SHAFT, REAR OUTPUT | 1 |
| 76 | 927-0888 | WASHER, SPACER, TC-28 | 1 |

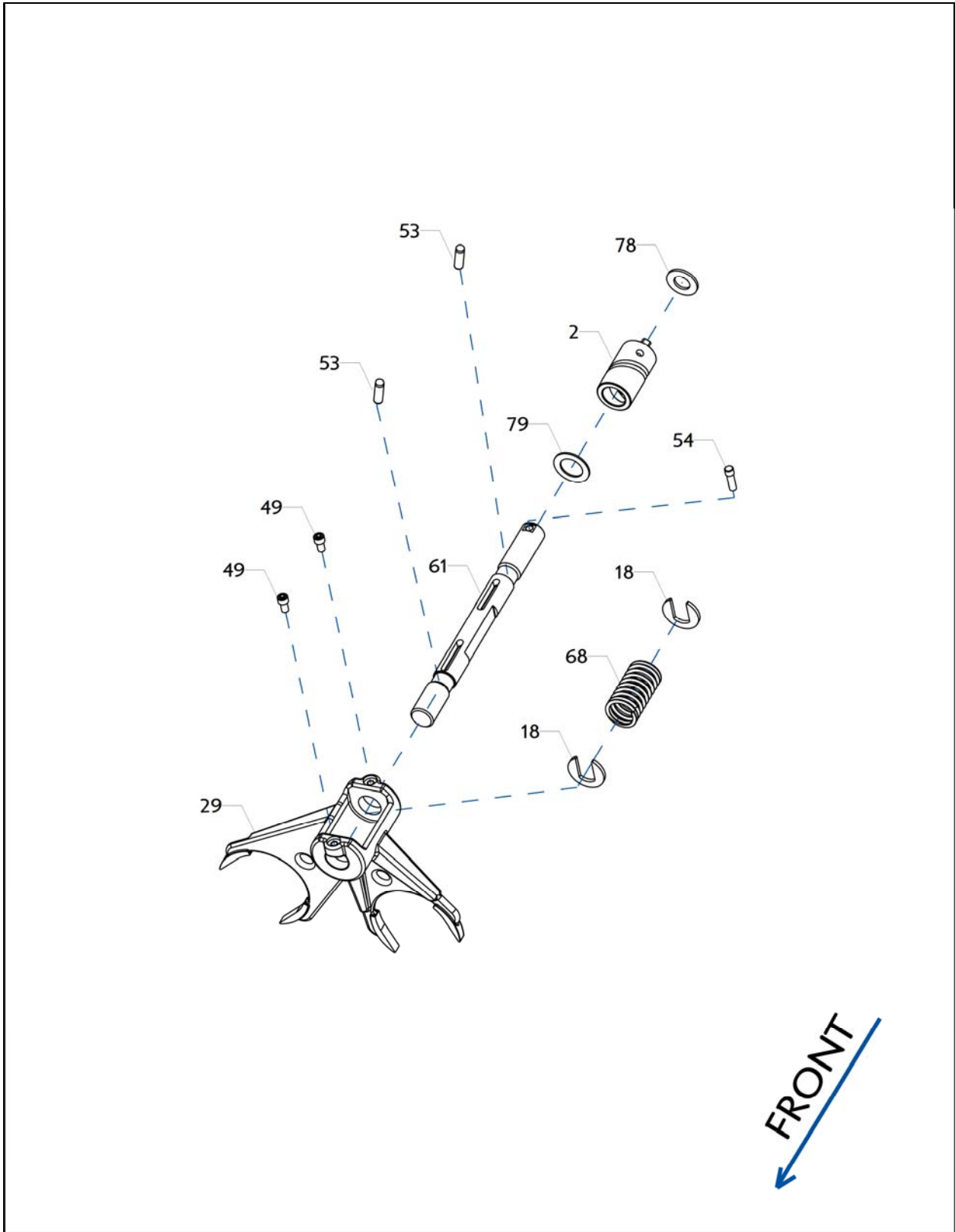
Front Axle Output Shaft and Related Parts



Front Axle Output Shaft and Related Parts

| <u>ITEM</u> | <u>PART NUMBER</u> | <u>DESCRIPTION</u> | <u>QTY</u> |
|-------------|---|----------------------------------|------------|
| 3 | 233-0598 | BEARING CONE | 1 |
| 4 | 233-0599 | BEARING CUP | 1 |
| 6 | 233-0623 | BEARING CUP | 1 |
| 5 | 233-0622 | BEARING CONE | 1 |
| 11 | 233-0628 | BEARING CONE | 2 |
| 12 | 233-0629 | BEARING CUP | 2 |
| 38 | 432-0833 | GEAR, HIGH RANGE, 35 TEETH | 1 |
| 43 | 432-0839 | GEAR, CLUTCH | 1 |
| 55 | 756-0368-001 | RING, BEARING SPACER, .279 THICK | * |
| | 756-0368-002 | RING, BEARING SPACER, .282 THICK | * |
| | 756-0368-003 | RING, BEARING SPACER, .285 THICK | * |
| | 756-0368-004 | RING, BEARING SPACER, .288 THICK | * |
| | 756-0368-005 | RING, BEARING SPACER, .291 THICK | * |
| | 756-0368-006 | RING, BEARING SPACER, .294 THICK | * |
| | 756-0368-007 | RING, BEARING SPACER, .276 THICK | * |
| | 756-0368-008 | RING, BEARING SPACER, .273 THICK | * |
| | *SELECT SPACER TO ACHIEVE .001 TO .005 SHAFT FLOAT. | | |
| 67 | 776-0432 | SHAFT, FRONT OUTPUT | 1 |
| 76 | 927-0888 | WASHER, SPACER, TC-28 | 1 |

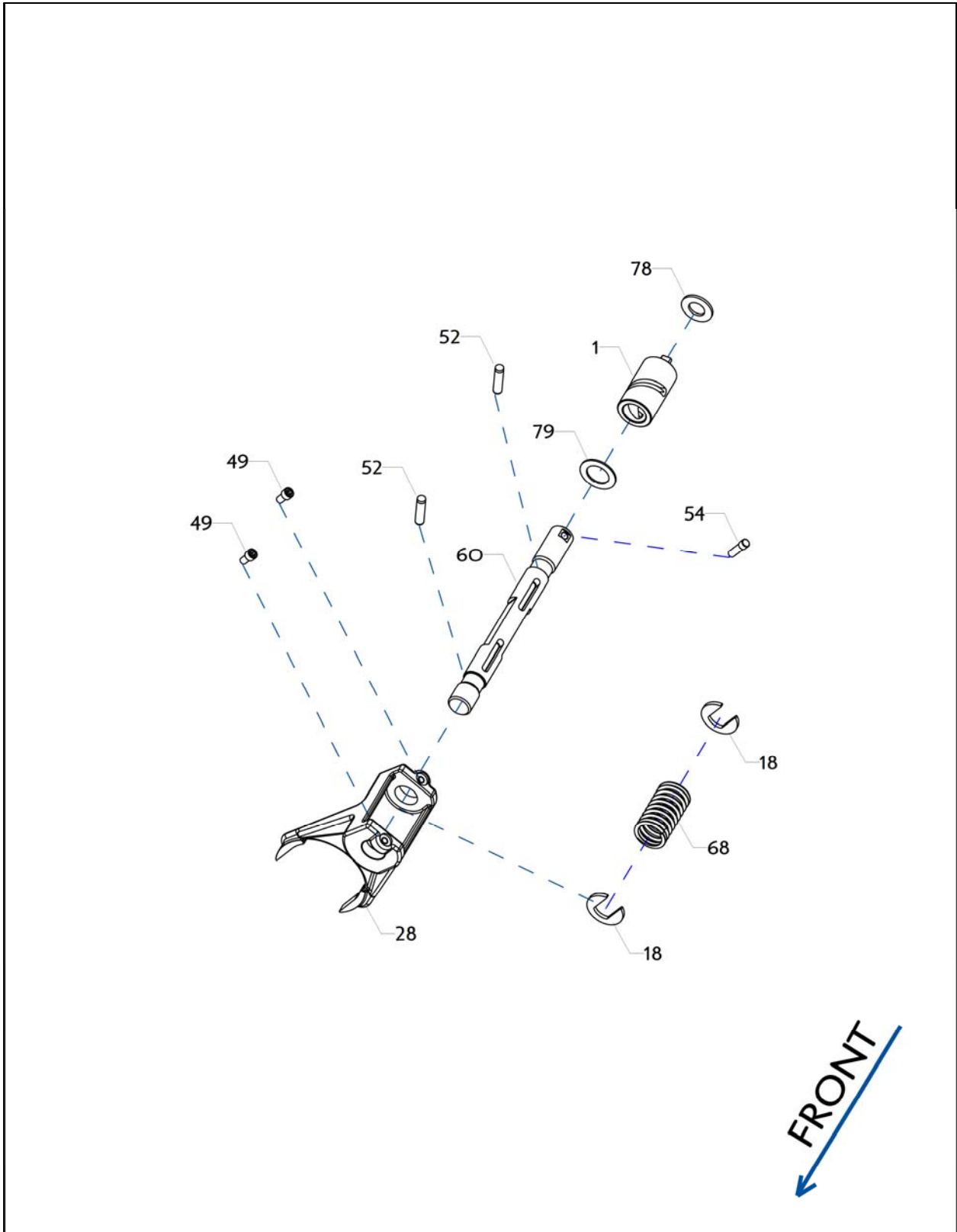
Shift Shaft (High/Low Engagement) and Related Parts



Shift Shaft (High/Low Engagement) and Related Parts

| <u>ITEM</u> | <u>PART NUMBER</u> | <u>DESCRIPTION</u> | <u>QTY</u> |
|--------------------|---------------------------|---|-------------------|
| 2 | 226-0249 | CAM, SHAFT, HIGH-LOW ENGAGEMENT | 1 |
| 18 | 235-0753 | CAP, SPRING, RETAINER | 2 |
| 29 | 367-0333 | FORK, SHIFT, MACHINED, HIGH-LOW ENGAGE | 1 |
| 49 | 724-0782 | SCREW, CAP SOCKET HEAD, 1/4-20 x 1/2 LG | 2 |
| 53 | 746-0678 | PIN DOWEL, .3125 x 1 STANDARD | 2 |
| 54 | 746-0758 | PIN, LOCKING, CAM, SHAFT | 1 |
| 61 | 769-0532 | SHAFT, SHIFT, HIGH-LOW ENGAGE | 1 |
| 68 | 777-0556 | SPRING, SHIFT | 1 |
| 78 | 927-0896 | WASHER, THRUST, CAM, 5/8" I.D. | 1 |
| 79 | 927-0897 | WASHER, THRUST, CAM, 7/8" I.D. | 1 |

Shift Shaft (Front Axle Engagement) and Related Parts



Shift Shaft (Front Axle Engagement) and Related Parts

| <u>ITEM</u> | <u>PART NUMBER</u> | <u>DESCRIPTION</u> | <u>QTY</u> |
|--------------------|---------------------------|---|-------------------|
| 1 | 226-0248 | CAM, SHAFT, FRNT AXLE ENGAGEMENT | 1 |
| 18 | 235-0753 | CAP, SPRING, RETAINER | 2 |
| 28 | 367-0332 | FORK, SHIFT, MACHINED, FRONT ENGAGE | 1 |
| 49 | 724-0782 | SCREW, CAP SOCKET HEAD, 1/4-20 x 1/2 LG | 2 |
| 52 | 746-0628 | PIN DOWEL, .3125 x 1.25 STANDARD | 2 |
| 54 | 746-0758 | PIN, LOCKING, CAM, SHAFT | 1 |
| 60 | 769-0532 | SHAFT, SHIFT, FRONT ENGAGE | 1 |
| 68 | 777-0556 | SPRING, SHIFT | 1 |
| 78 | 927-0896 | WASHER, THRUST, CAM, 5/8" I.D. | 1 |
| 79 | 927-0897 | WASHER, THRUST, CAM, 7/8" I.D. | 1 |

