



## Fabco TC-200 Transfer Case Parts Manual

Pro Gear Fabco TC-200 Transfer Case Parts Manual to assist in identifying your Fabco unit.

If you need any assistance identifying the correct transfer case unit for your truck and equipment, contact your Fabco replacement part specialists at Pro Gear and Transmission.

Pro Gear Transmission has same day shipping and 1000's of products in stock and ready to ship internationally for your next project.

For parts or service contact the Fabco specialists at Pro Gear & Transmission, Inc.

1 (877) 776-4600  
(407) 872-1901  
parts@eprogear.com



# **FABCO TC-200 TRANSFER CASE PARTS MANUAL**

**Part Number  
873-0042-001**

Fabco Automotive Corporation, Livermore, CA

## 9. ILLUSTRATED PARTS MANUAL

### TABLE OF CONTENTS

	<b>PAGE</b>
P.1 Introduction .....	33
P.2 Input Shaft Parts .....	34
P.3 Intermediate Shaft Parts .....	36
P.4 Front Output Shaft Parts .....	38
P.5 Rear Output Shaft Parts.....	40
P.6 Front Drive Shift Parts.....	42
P.7 High/Low Range Shift Parts.....	44
P.8 Rear Drive Shift Parts .....	46
P.9 Housing Parts .....	48

### P.1 INTRODUCTION

TO USE THIS ILLUSTRATED PARTS SECTION:

1. Refer to the figure which illustrates the needed part.
2. Find the required part and note the item number.
3. Locate the item number in the parts list section for the required part number, description, and quantity used.

**NOTE: When ordering parts, specify the transfer case model number, the serial number and any other information that is on the Fabco nameplate located on the transfer case housing.**

The part numbers contained in this manual were in effect at the time the manual was approved for printing and are subject to change without notice or liability. Fabco Automotive Corporation reserves the right to change parts at anytime.

**USE ONLY GENUINE FABCO PARTS**

## P.2 TC-200 INPUT SHAFT PARTS

See Figure P.2

<u>ITEM</u>	<u>PART NO.</u>	<u>DESCRIPTION</u>	<u>QTY</u>	<u>FOOT NOTE</u>
1	688-0694	Locknut, 1 1/2-12	1	
2	927-0775-005	Washer	1	
3	732-0396	Oil Seal	1	
4	233-0537	Bearing Cup	1	
5	233-0558	Bearing Cone	1	
6	432-0667	Gear	1	
7	966-0329	Woodruff Key	1	
8	776-0269	Shaft	1	
9	432-0669	Clutch Collar Gear	1	
10	233-0542	Bearing Cone	2	
11	233-0539	Bearing Cup	2	
12	756-0257-001	Bearing Spacer Ring,.352 Thick		1
	756-0257-002	Bearing Spacer Ring,.355 Thick		1
	756-0257-003	Bearing Spacer Ring,.358 Thick		1
	756-0257-004	Bearing Spacer Ring,.361 Thick		1
	756-0257-005	Bearing Spacer Ring,.348 Thick		1
	756-0257-006	Bearing Spacer Ring,.349 Thick		1
	756-0257-007	Bearing Spacer Ring,.350 Thick		1
	756-0257-008	Bearing Spacer Ring,.351 Thick		1
	756-0257-009	Bearing Spacer Ring,.353 Thick		1
	756-0257-010	Bearing Spacer Ring,.354 Thick		1
	756-0257-011	Bearing Spacer Ring,.356 Thick		1
	756-0257-012	Bearing Spacer Ring,.357 Thick		1
	756-0257-013	Bearing Spacer Ring,.359 Thick		1
	756-0257-014	Bearing Spacer Ring,.360 Thick		1
13	432-0665	Gear	1	
14	756-0259	Spacer Ring	1	
15	233-0443	Bearing Cone	1	
16	233-0444	Bearing Cup	1	
17	756-0258	Spacer Ring	1	
18	688-0645	Bearing Locknut	1	
19	744-0359-001	Shim, .002 Thick Red	A/R	2
	744-0359-002	Shim, .005 Thick Blue	A/R	2
	744-0359-003	Shim, .015 Thick Pink	A/R	2
	744-0359-004	Shim, .030 Thick Coral	A/R	2
20	235-0647-001	Cap	1	3
	235-0647-002	Cap	1	4
21	265-0238	Cap Screw, 7/16-14 x 1 1/4	6	

### FOOTNOTES:

1. Select one spacer ring. See service manual.
2. See service manual.
3. Models without optional lubrication pump.
4. Models equipped with optional lubrication pump.

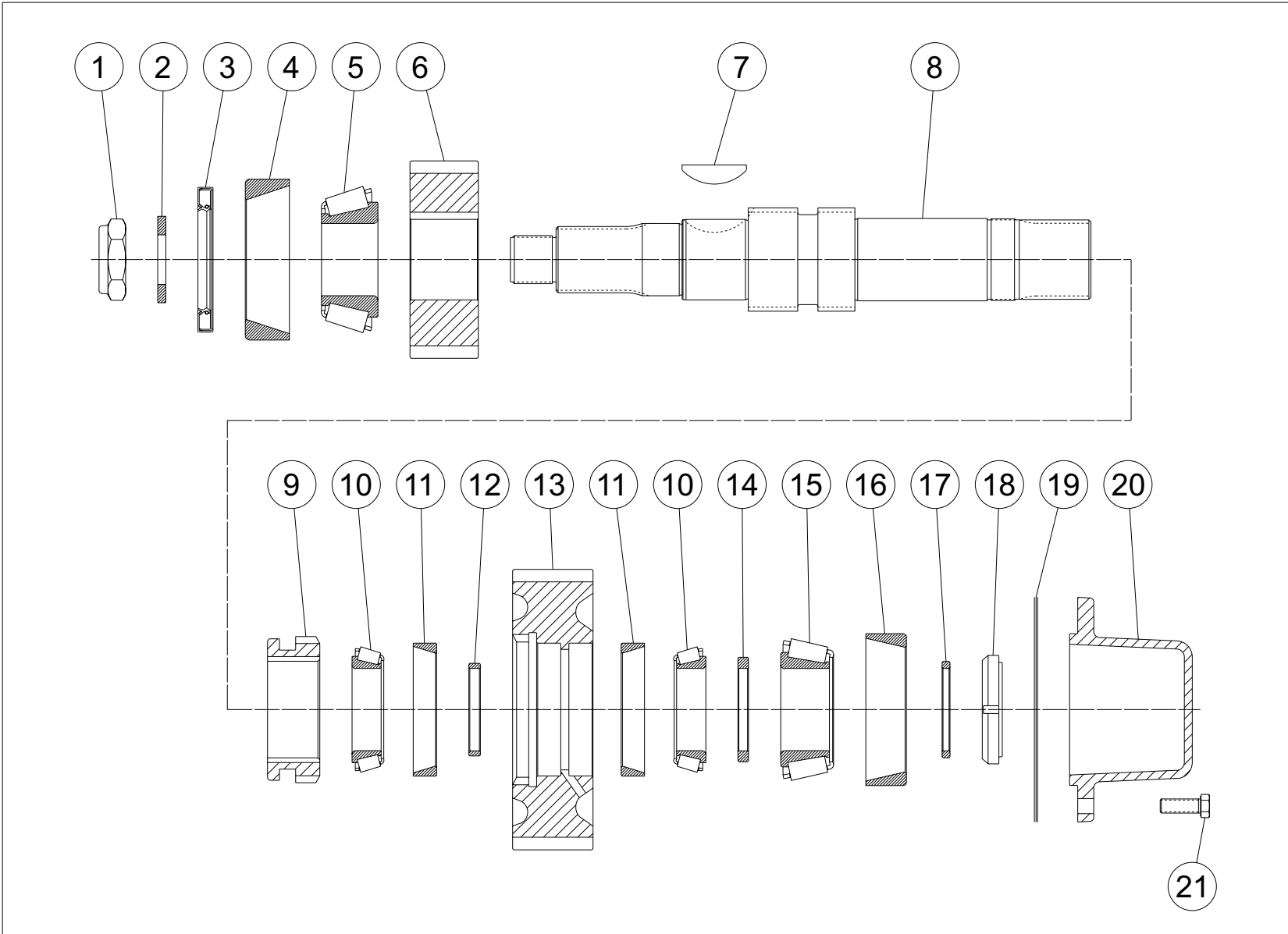


Figure P.2 - TC-200 Input Shaft Parts

### P.3 TC-200 INTERMEDIATE SHAFT PARTS

See Figure P.3

<u>ITEM</u>	<u>PART NO.</u>	<u>DESCRIPTION</u>	<u>QTY</u>	<u>FOOT NOTE</u>
1	688-0645	Bearing Locknut	1	
2	756-0258	Spacer Ring	1	
3	233-0444	Bearing Cup	1	
4	233-0443	Bearing Cone	1	
5	233-0542	Bearing Cone	2	
6	233-0539	Bearing Cup	2	
7	432-0668	Gear	1	
8	756-0257-001	Bearing Spacer Ring,.352 Thick		1
	756-0257-002	Bearing Spacer Ring,.355 Thick		1
	756-0257-003	Bearing Spacer Ring,.358 Thick		1
	756-0257-004	Bearing Spacer Ring,.361 Thick		1
	756-0257-005	Bearing Spacer Ring,.348 Thick		1
	756-0257-006	Bearing Spacer Ring,.349 Thick		1
	756-0257-007	Bearing Spacer Ring,.350 Thick		1
	756-0257-008	Bearing Spacer Ring,.351 Thick		1
	756-0257-009	Bearing Spacer Ring,.353 Thick		1
	756-0257-010	Bearing Spacer Ring,.354 Thick		1
	756-0257-011	Bearing Spacer Ring,.356 Thick		1
	756-0257-012	Bearing Spacer Ring,.357 Thick		1
	756-0257-013	Bearing Spacer Ring,.359 Thick		1
	756-0257-014	Bearing Spacer Ring,.360 Thick		1
9	432-0669	Clutch Collar Gear	1	
10	776-0262	Shaft	1	
11	966-0328	Woodruff Key	1	
12	432-0666	Gear	1	
13	233-0379	Bearing Cone	1	
14	233-0378	Bearing Cup	1	
15	744-0362-001	Shim, .002 Thick Red	A/R	2
	744-0362-002	Shim, .005 Thick Blue	A/R	2
	744-0362-003	Shim, .015 Thick Pink	A/R	2
	744-0362-004	Shim, .030 Thick Coral	A/R	2
16	235-0653	Cap	1	
17	427-0468	Gasket	1	
18	235-0633	Cap	1	3
19	927-0299	Lockwasher, 5/16	6	3
20	265-0355	Cap Screw, 5/16-24 x 3/4	6	3
21	265-0238	Cap Screw, 7/16-14 x 1 1/4	6	

#### FOOTNOTES:

1. Select one spacer ring. See service manual.
2. See service manual.
3. Parts not used for TC-200's with lubricatin pump. See lubrication system parts.

For parts or service call us  
Pro Gear & Transmission, Inc.



**1 (877) 776-4600**

**(407) 872-1901**

**[parts@eprogear.com](mailto:parts@eprogear.com)**

**906 W. Gore St.**

**Orlando, FL 32805**



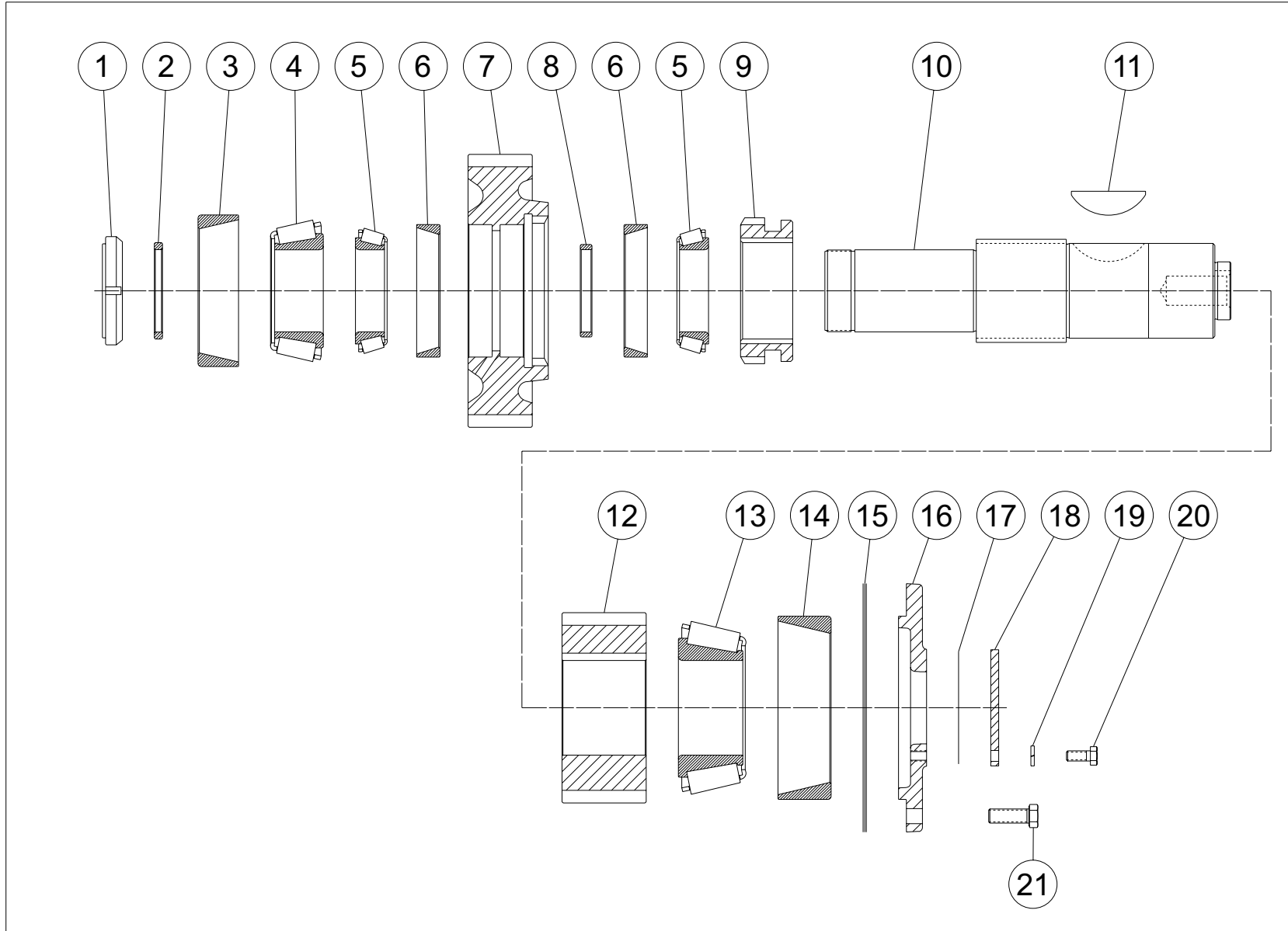


Figure P.3 - TC-200 Intermediate Shaft Parts



## P.4 TC-200 FRONT OUTPUT SHAFT PARTS

See Figure P.4

<u>ITEM</u>	<u>PART NO.</u>	<u>DESCRIPTION</u>	<u>QTY</u>	<u>FOOT NOTE</u>
1	688-0694	Locknut, 1 1/2-12	1	
2	927-0775-005	Washer	1	
3	732-0396	Oil Seal	1	
4	233-0272	Bearing Cup	1	
5	233-0559	Bearing Cone	1	
6	776-0272	Shaft	1	
7	432-0669	Clutch Collar Gear	1	
8	233-0542	Bearing Cone	2	
9	233-0539	Bearing Cup	2	
10	756-0257-001	Bearing Spacer Ring,.352 Thick		1
	756-0257-002	Bearing Spacer Ring,.355 Thick		1
	756-0257-003	Bearing Spacer Ring,.358 Thick		1
	756-0257-004	Bearing Spacer Ring,.361 Thick		1
	756-0257-005	Bearing Spacer Ring,.348 Thick		1
	756-0257-006	Bearing Spacer Ring,.349 Thick		1
	756-0257-007	Bearing Spacer Ring,.350 Thick		1
	756-0257-008	Bearing Spacer Ring,.351 Thick		1
	756-0257-009	Bearing Spacer Ring,.353 Thick		1
	756-0257-010	Bearing Spacer Ring,.354 Thick		1
	756-0257-011	Bearing Spacer Ring,.356 Thick		1
	756-0257-012	Bearing Spacer Ring,.357 Thick		1
	756-0257-013	Bearing Spacer Ring,.359 Thick		1
	756-0257-014	Bearing Spacer Ring,.360 Thick		1
11	432-0665	Gear	1	
12	756-0259	Spacer Ring	1	
13	233-0443	Bearing Cone	1	
14	233-0444	Bearing Cup	1	
15	756-0258	Spacer Ring	1	
16	688-0645	Bearing Locknut	1	
17	744-0359-001	Shim, .002 Thick Red	A/R	2
	744-0359-002	Shim, .005 Thick Blue	A/R	2
	744-0359-003	Shim, .015 Thick Pink	A/R	2
	744-0359-004	Shim, .030 Thick Coral	A/R	2
18	235-0649	Cap	1	
19	265-0238	Cap Screw, 7/16-14 x 1 1/4	6	

### FOOTNOTES:

1. Select one spacer ring. See service manual.
2. See service manual.

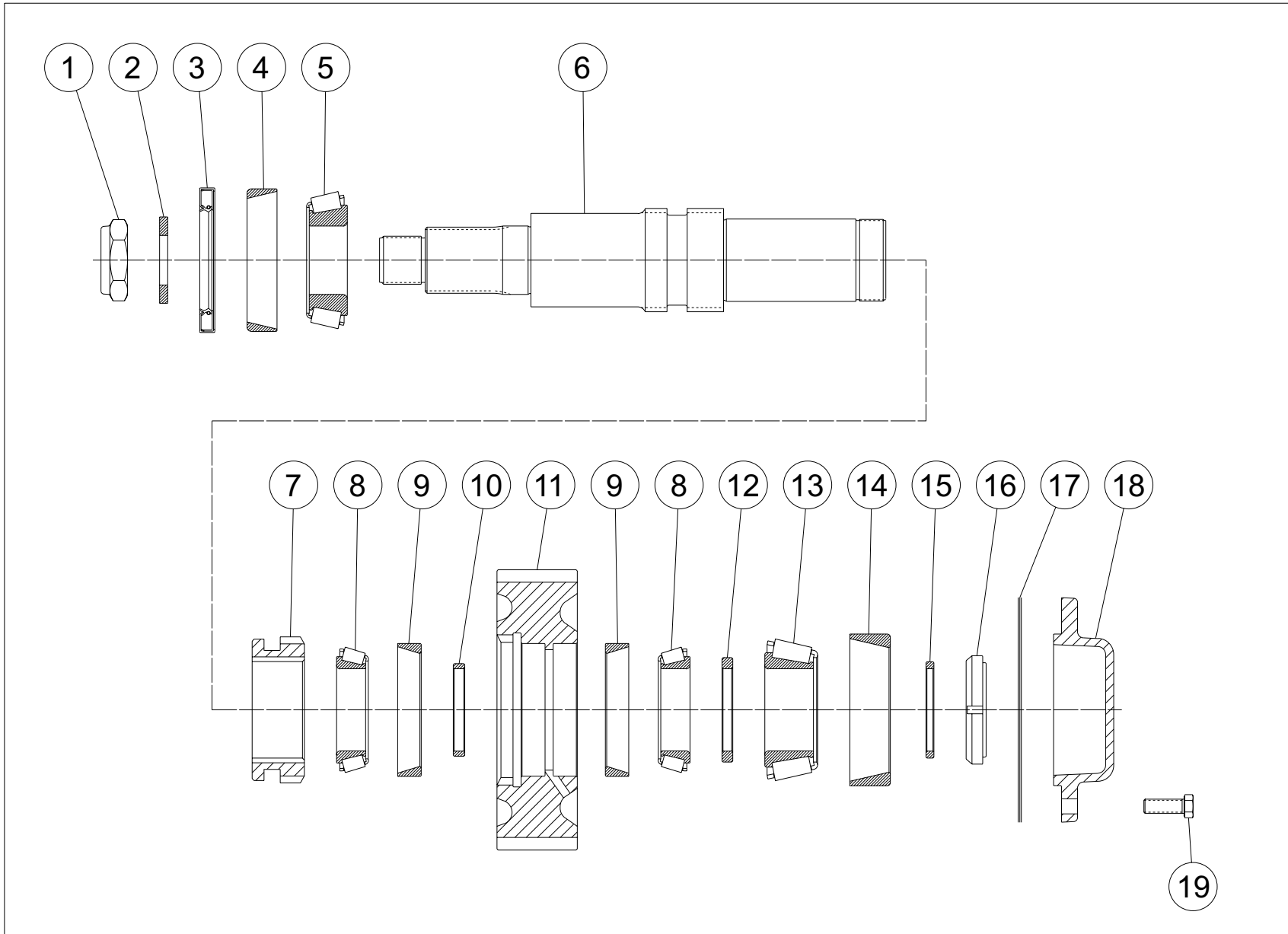


Figure P.4 - TC-200 Front Output Shaft Parts

## P.5 TC-200 REAR OUTPUT SHAFT PARTS

See Figure P.5

<u>ITEM</u>	<u>PART NO.</u>	<u>DESCRIPTION</u>	<u>QTY</u>	<u>FOOT NOTE</u>
1	233-0272	Bearing Cup	1	
2	233-0543	Bearing Cone	1	
3	776-0273	Shaft	1	
4	432-0669	Clutch Collar Gear	1	
5	233-0542	Bearing Cone	2	
6	233-0539	Bearing Cup	2	
7	756-0257-001	Bearing Spacer Ring,.352 Thick		1
	756-0257-002	Bearing Spacer Ring,.355 Thick		1
	756-0257-003	Bearing Spacer Ring,.358 Thick		1
	756-0257-004	Bearing Spacer Ring,.361 Thick		1
	756-0257-005	Bearing Spacer Ring,.348 Thick		1
	756-0257-006	Bearing Spacer Ring,.349 Thick		1
	756-0257-007	Bearing Spacer Ring,.350 Thick		1
	756-0257-008	Bearing Spacer Ring,.351 Thick		1
	756-0257-009	Bearing Spacer Ring,.353 Thick		1
	756-0257-010	Bearing Spacer Ring,.354 Thick		1
	756-0257-011	Bearing Spacer Ring,.356 Thick		1
	756-0257-012	Bearing Spacer Ring,.357 Thick		1
	756-0257-013	Bearing Spacer Ring,.359 Thick		1
	756-0257-014	Bearing Spacer Ring,.360 Thick		1
8	432-0665	Gear	1	
9	756-0262	Spacer Ring	1	
10	233-0493	Bearing Cone	1	
11	233-0544	Bearing Cup	1	
12	756-0263	Spacer Ring	1	
13	432-0678	Gear, Speedometer Sensor	1	
14	744-0278	Shim, .030 Thick Coral	A/R	2
	744-0279	Shim, .015 Thick Pink	A/R	2
	744-0282	Shim, .005 Thick Blue	A/R	2
	744-0283	Shim, .002 Thick Red	A/R	2
15	237-0629	Carrier	1	
16	732-0396	Oil Seal	1	
17	688-0738	Locknut	1	
18	265-0238	Cap Screw, 7/16-14 x 1 1/4	6	

### FOOTNOTES:

1. Select one spacer ring. See service manual.
2. See service manual.

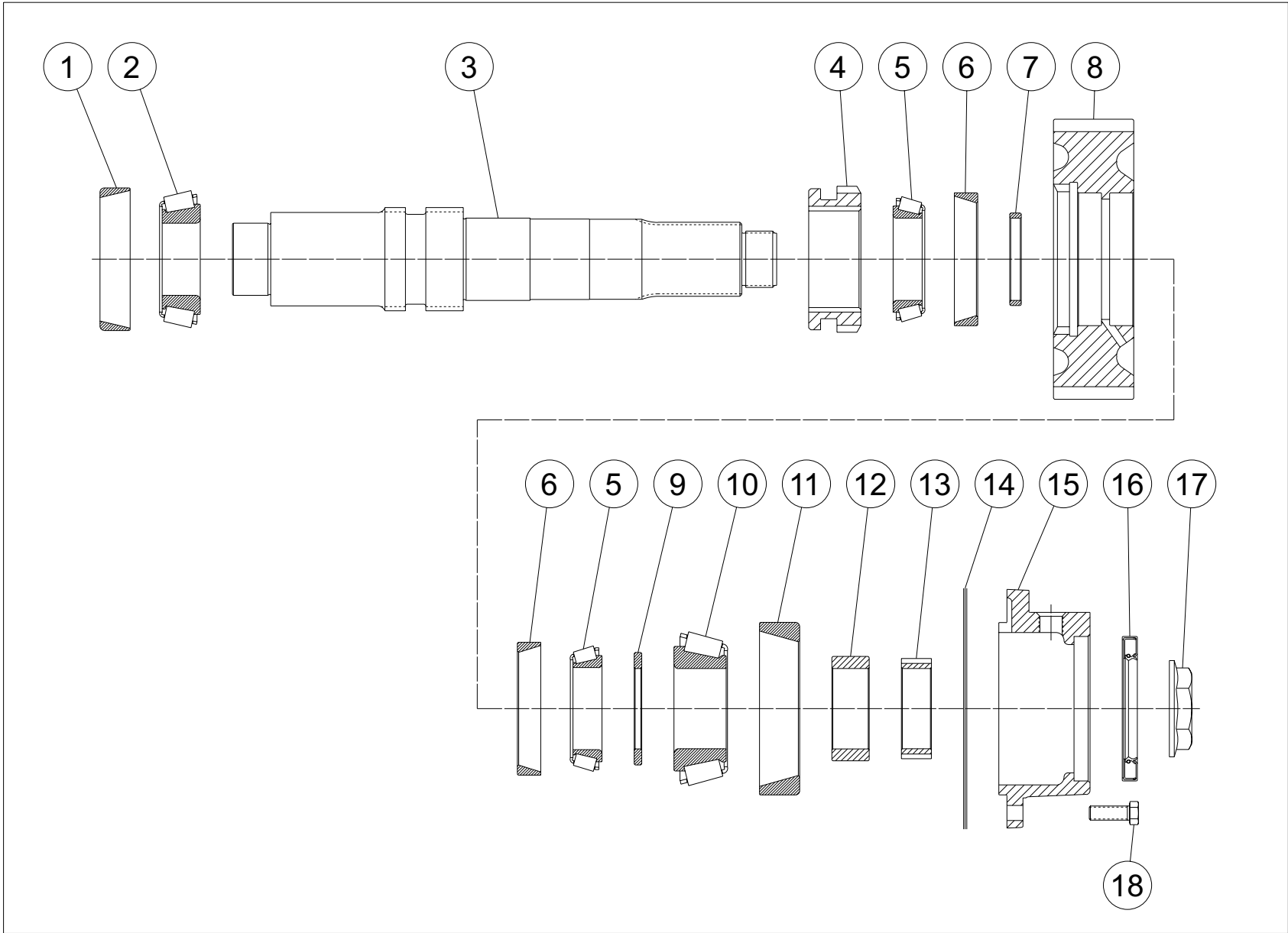


Figure P.5 - TC-200 Rear Output Shaft Parts

## P.6 TC-200 FRONT DRIVE SHIFT PARTS

See Figure P.6

<u>ITEM</u>	<u>PART NO.</u>	<u>DESCRIPTION</u>	<u>QTY</u>
1	265-0386	Cap Screw, 1/4-20 x 3/4	4
2	235-0634	Cap	1
3	673-0229	O-Ring	1
4	688-0464	Locknut, 3/8-24	1
5	927-0643	Washer	1
6	675-0326	O-Ring	1
7	753-0232	Piston	1
8	339-0223	Felt Strip	1
9	736-0747	Stop Ring	1
10	777-0477	Spring	1
11	782-0288	O-Ring	1
12	776-1265	Shifter Shaft Assembly	1
13	927-0427	Copper Washer	1
14	798-0245	Indicator Switch	1
15	746-0739	Shift Indicator Pin	1

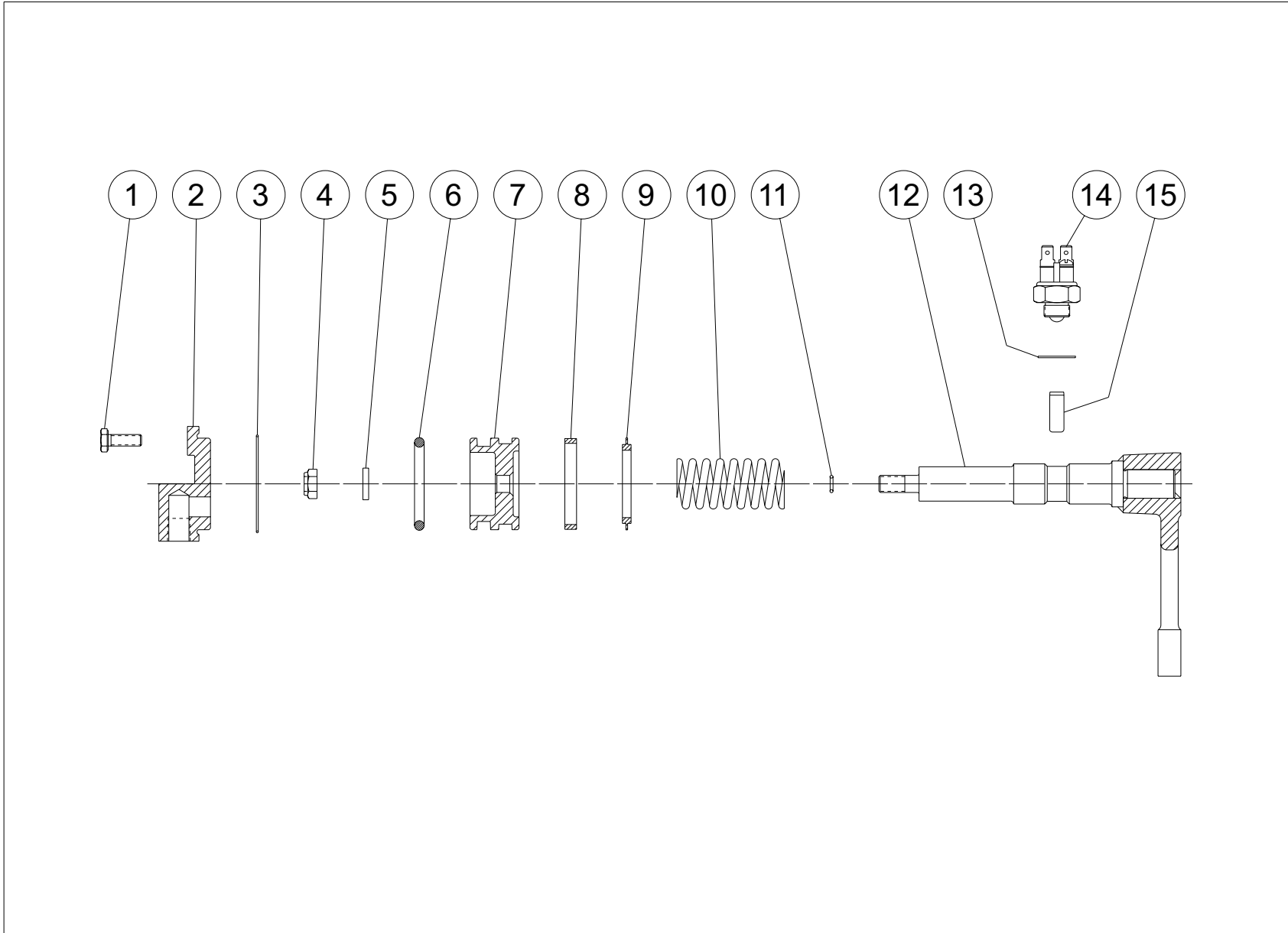


Figure P.6 - TC-200 Front Drive Shift Parts

## P.7 TC-200 HIGH/LOW RANGE SHIFT PARTS

See Figure P.7

<u>ITEM</u>	<u>PART NO.</u>	<u>DESCRIPTION</u>	<u>QTY</u>
1	758-0328	Expansion Plug	1
2	776-0267	Shifter Shaft	1
3	782-0288	O-Ring	1
4	947-0223	Lockwire	2
5	724-0222	Set Screw	2
6	367-0292	Shift Fork	2
7	675-0224	O-ring	3
8	884-0224	Adapter Tube	1
9	883-0887-007	Shift Cylinder Tube	1
10	777-0534	Spring	1
11	736-0747	Stop Ring	1
12	339-0223	Felt Strip	1
13	753-0232	Piston	1
14	675-0326	O-Ring	1
15	927-0643	Washer	1
16	688-0464	Locknut, 3/8-24	1
17	235-0352	Cap	1
18	283-0235	Cap Screw, 1/4-20 x 4 1/4	4

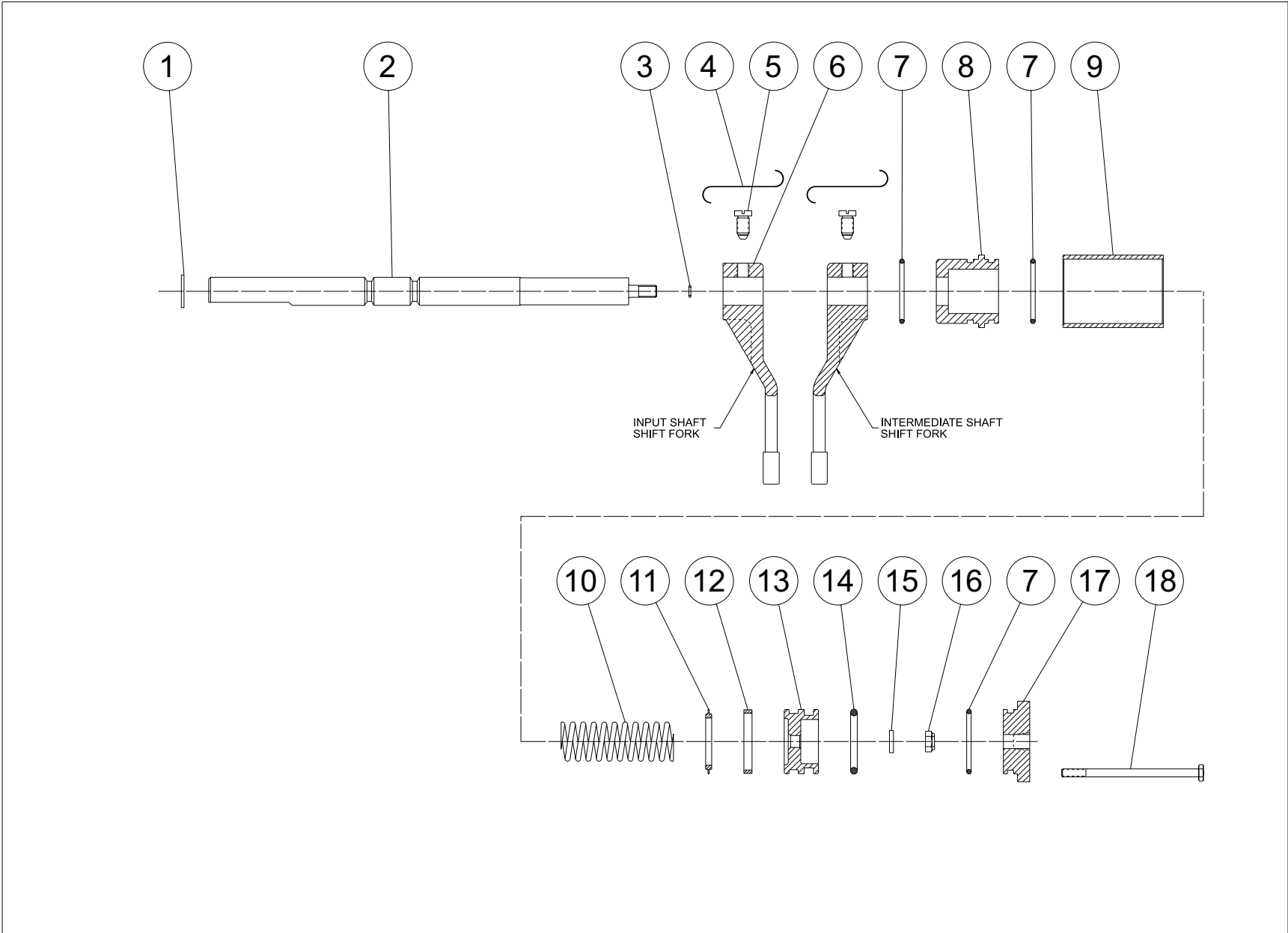


Figure P.7 - TC-200 High/Low Range Shift Parts



## P.8 TC-200 REAR DRIVE SHIFT PARTS

See Figure P.8

<u>ITEM</u>	<u>PART NO.</u>	<u>DESCRIPTION</u>	<u>QTY</u>
1	758-0328	Expansion Plug	1
2	776-0266	Shifter Shaft	1
3	782-0288	O-Ring	1
4	947-0223	Lockwire	1
5	724-0222	Set Screw	1
6	367-0292	Shift Fork	1
7	675-0224	O-Ring	3
8	883-0482	Adapter Tube	1
9	883-0887-016	Shift Cylinder Tube	1
10	777-0477	Spring	1
11	736-0747	Stop Ring	1
12	339-0223	Felt Strip	1
13	753-0232	Piston	1
14	675-0326	O-Ring	1
15	927-0643	Washer	1
16	688-0464	Locknut, 3/8-24	1
17	235-0352	Cap	1
18	265-0769	Cap Screw, 1/4-20 x 3 3/4	4

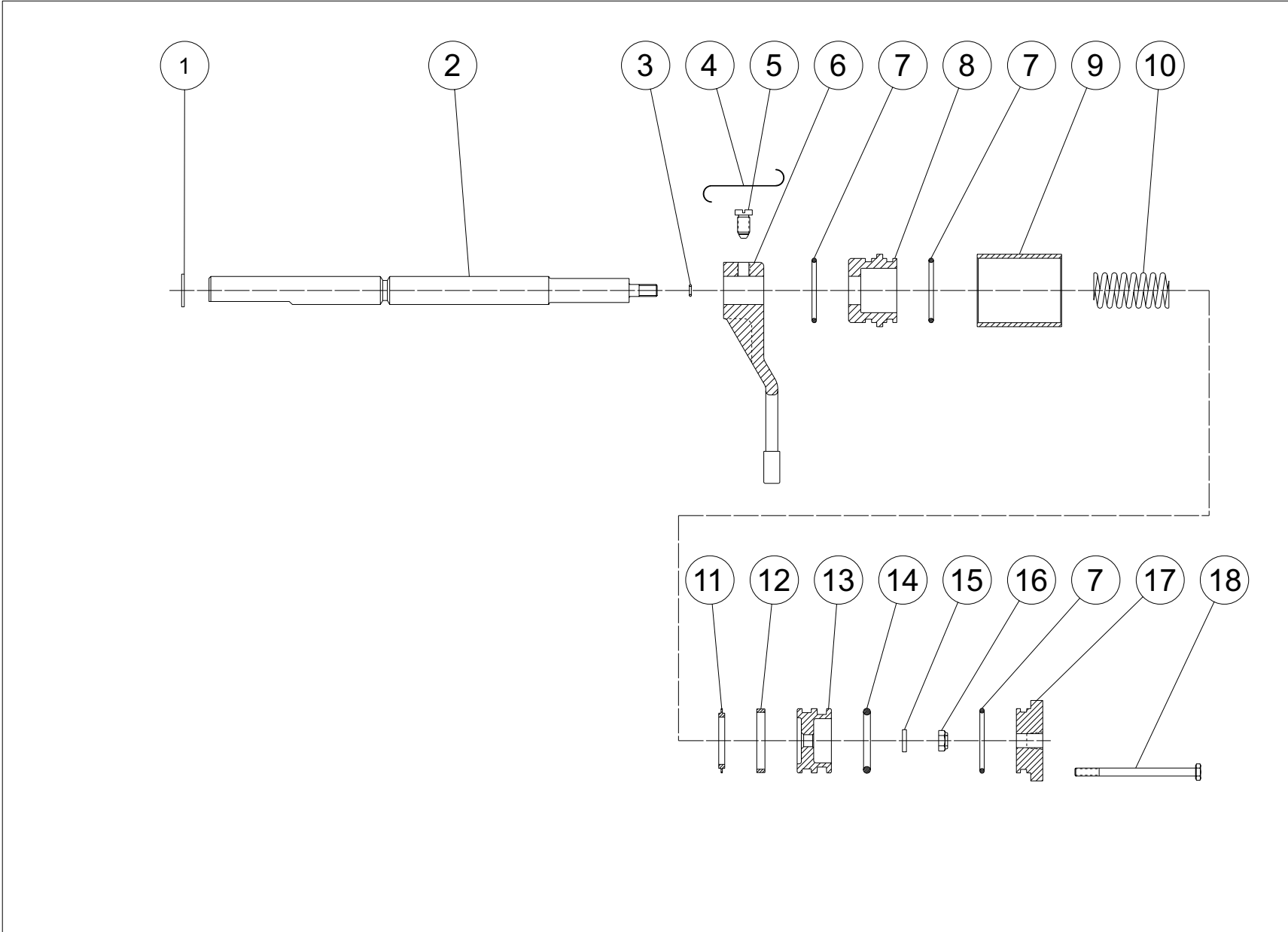


Figure P.8 - TC-200 Rear Drive Shift Parts

## P.9 TC-200 HOUSING PARTS

See Figure P.9

<u>ITEM</u>	<u>PART NO.</u>	<u>DESCRIPTION</u>	<u>QTY</u>	<u>FOOT NOTE</u>
1	478-0282	Housing, Front	1	
2	478-0284	Housing, Rear	1	
3	265-0535	Bolt, 1/2-13 x 4, Grade 5, Hex Head	3	
4	927-0722	Washer, 1/2"	22	
5	287-0276	Bushing	2	1
6	427-0539	Gasket	1	
7	758-0232	Plug, 1/4 NPT	2	
8	836-0223	Vent, Breather	1	
9	357-0678	Elbow	1	
10	626-0228	Serial Number Plate	1	
11	724-0276	Drive Screw	2	
12	758-0229	Plug, 3/4 NPT	2	
13	265-0979	Bolt, 1/2-13 x 3 1/2, Grade 5, Hex Head	18	
14	758-0274	Magnetic Drain Plug, 3/4 NPT	2	2
15	758-0375	Plug, 3/8 NPT	1	

### FOOTNOTES:

1. Upper plug not used for transfer case with lubricatin pump. See lubricatin system parts.
2. Lower rear plug not used for transfer case with lubrication pump. See lubrication system parts.

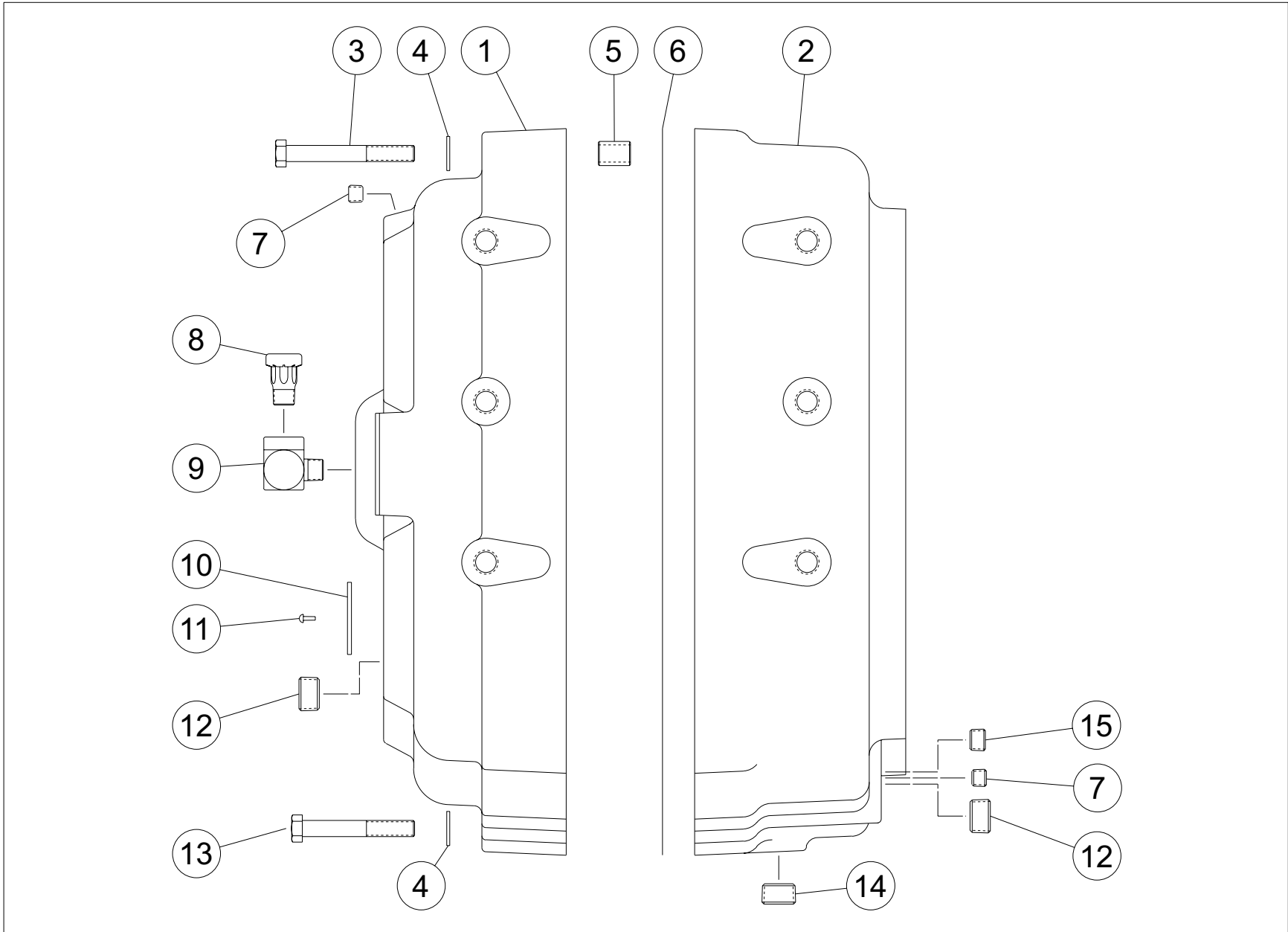


Figure P.9 - TC-200 Housing Parts