



Pro Gear MGX-488 Transfer Case product specifications to assist in identifying the mounting connection of your Meritor transfer case.

If you need any assistance identifying the correct Meritor transfer case unit for your truck and equipment, contact your Meritor replacement specialists at Pro Gear and Transmission.

Pro Gear stocks every part for your Meritor transfer case and has same day shipping and 1000's of products in stock and ready to ship internationally for your next project.

For parts or service contact the Meritor specialists at Pro Gear & Transmission, Inc.

1 (877) 776-4600  
(407) 872-1901  
[parts@eprogear.com](mailto:parts@eprogear.com)

# MERITOR® MPT™ SERIES POWER TAKE-OFFS (PTOS) AND MGX™ SERIES GEARBOXES



Meritor's split-shaft power take off units (PTOs) and creeper drives are specifically designed for severe-duty, high-mobility, high-torque and all-wheel drive configurations across a broad range of applications:

- Construction and utility
- Severe service
- Defense and military applications
- Fire and rescue
- Hydro excavation
- Agriculture
- Oil field service
- Railcar

## MPT™ Series

### MPT-180 / MPT-180-23

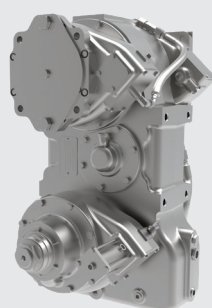
Full-power, single-speed, three-shaft power take-off, capable of supporting up to 600 HP and 3,000 rpm input speeds.\*

### MPT-500

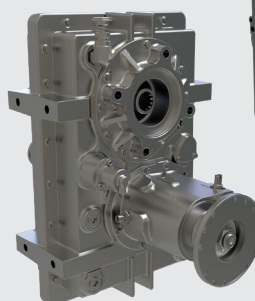
Single-speed, three-shaft power takeoff with wide selection of ratios and modular output options capable of supporting up to 650 HP and 3,500 rpm input speeds.\*

### MPT-518A

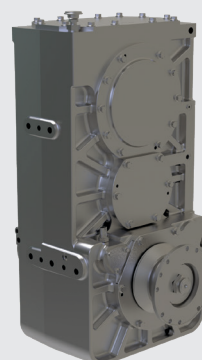
Single-speed, two-shaft power takeoff with wide selection of ratios and modular output options capable of supporting up to 600 HP and 3,500 rpm input speeds.\*



MPT-180



MPT-518A



MPT-500

## Features and Specifications

Model	MPT-180 / MPT-180-23	MPT-500	MPT-518A
Type	Split-shaft power takeoff	Split-shaft power takeoff	Split-shaft power takeoff
Speeds	Single	Single	Single
Shafts	3	3	2
Ratios	1:1	1:1, 1:1.13, 1:1.27, 1:1.48, 1:1.49, 1:1.67	1:1.03, 1:1.17, 1:1.29, 1:1.43, 1:1.58, 1:1.75
Horsepower (HP)	600	650	600
Speed (RPM)	3,000	3,500	3,500
Output Location	Upper, Front/Rear	Upper and Middle, Front/Rear	Upper, Front/Rear
Input-Output Rise (in)	16.25"/23.3"	17"	10.33"
Nominal Input Torque Rating (lbs.-ft)	18,000	30,000	18,000
Oil Pump	Standard	Standard	Standard
PTO Shift	Air	Air	Air



## MGX™ Creeper Drives

### Features

- Combination transfer case and creeper drive
- Rear axle disconnect, creep drive engagement, input driven pump drive
- Permits hydraulically driven, low-creep speed operations while providing pump drives for creep and other machine functions

#### MGX-466

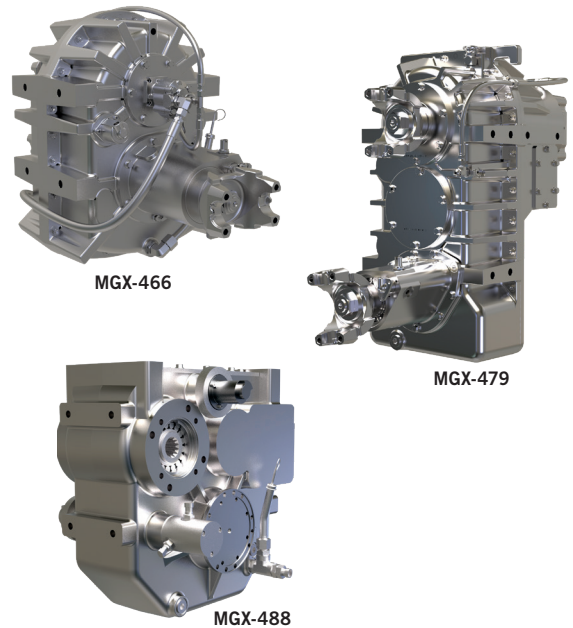
Designed to work in conjunction with the driveline to provide an alternate method of propulsion for low speed, high-torque creeping applications.

#### MGX-479

Combination drop-style transfer case and creeper drive features dual input modes using the vehicle's engine for road mode or a hydraulic motor for creep mode. In road mode, power into the front top shaft, out of the bottom shaft to the rear axle. In creep mode, a hydraulic motor drives an air-engaged planetary reduction opposite the input shaft. Features a three-shaft design, alternate creep drive ratios and an optional front axle disconnect for off-road applications.

#### MGX-488

Delivers low speed and high torque, featuring a multi-shaft design with internal disconnects for axle disengagement and pump engagement.



Specifications			
Model	MGX-466	MGX-479	MGX-488
Type	Creeper Drive	Creeper Drive	Creeper Drive
Speeds	Single	Single	Single
Shafts	2	3	2
Ratios	2.5:1, 1:1	15.39:1	6.02:1, 2.92:1
Horsepower (HP)	600	600	650
Speed (RPM)	3,000	3,000	3,000
Output Location	Lower Rear	Lower Front and Rear	Thru Drive and Upper Front and Rear
Center Distance (in)	8.46"	16.92"	8.14"
Nominal Input Torque Rating (lbs-ft)	12,000	12,000	18,000
Proportional Diff	N/A	N/A	N/A
PTO	N/A	N/A	Yes
Declutch	Engine	Optional	Rear Axle
Lubrication	Splash	Customer Provided Remote Pump	Splash
Obs.	Aluminum Housing	Aluminum Housing, Other Ratios Available	Aluminum Housing, Pump Drive Ratio 0.555:1

Trademarks, brands and names depicted herein are the property of Meritor, Inc. or its affiliates.



Meritor Heavy Vehicle Systems, LLC  
2135 West Maple Road  
Troy, Michigan 48064 USA

Call 1-866-668-7221  
or visit [meritor.com](http://meritor.com).

©2018 Meritor, Inc.  
Litho in USA, SP-18131  
Revised 12-18

Pro Gear and Transmission • 906 W. Gore St. Orlando, FL 32805 • 1 (877) 776-4600 / (407) 872-1901 • [parts@eprogear.com](mailto:parts@eprogear.com)